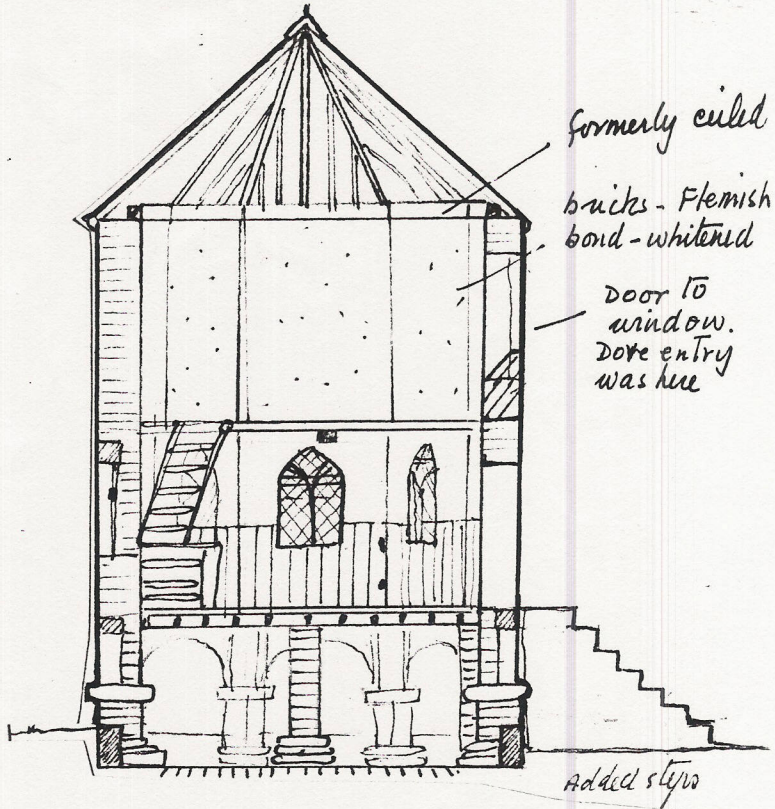


4 Bricks = 27cm. down.
 1 Brick = 21.5 x 6cm.
 Random Bond

N.N.E. Elevation.

J.M. Oldroyd
 9.1984



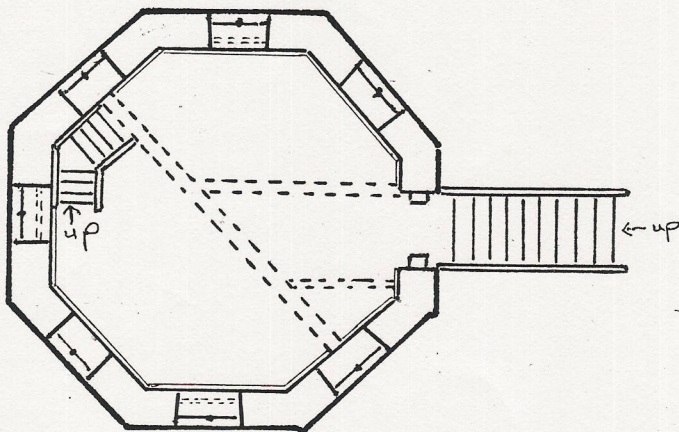
0 2 4 5m

I. HARDING
 9.84



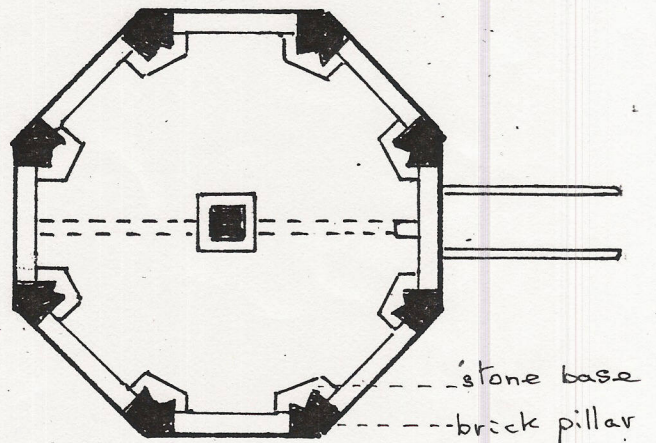
GRANARY/DOVECOTE

First Floor



0 1 2 3m

Ground level



M. Stevens
 9/84