

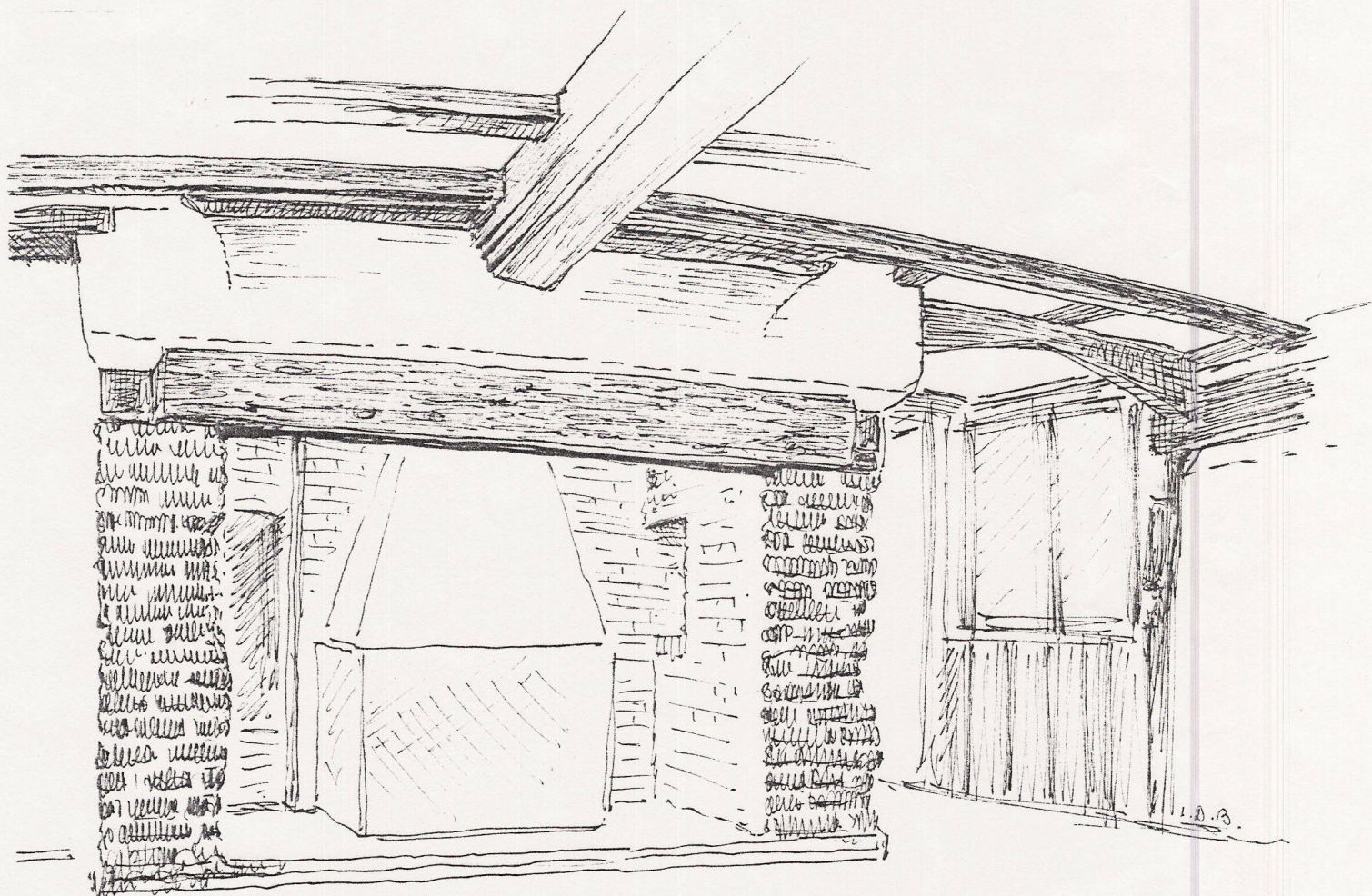
SHACKLEFORD

COBBLERS

SU 932 455

By kind invitation of Mrs. Renate John

A timber-framed 4-bay central smoke bay house with half-hipped roof and chimney inserted into the smoke bay. Square panel framing with tension braces, and no jowl posts. Clasped purlin roof is tiled. First build late 16 C., and end outshot added soon after. Extensions to outshot in 20 C.



The house faces Lombard Street which leads westwards out of the village of Shackleford. At its west end the ground rises steeply to a public footpath at right angles to Lombard Street.

Outside timber framing is largely complete and is in square panels with corner tension braces. Brick infill replaces the original wattle and daub, with the east end of the house having a great mixture of infill materials. At this end, three large empty mortices suggest that a low lean-to (about 1½ meters high) was once put up against this wall, and later removed. Other empty mortices in the timber simply show that a number of timbers have been re-used. There is at least one blocked window, upstairs on the garden side. At the west end there is an outshot making a long continuous catslide roof with the half hip. All bay posts stop short above ground level and

Inside these are also visible, with in places, the timber cill on which they rested, laying on top of a stone or brick cill, 'for dryness' sake.