

The end truss of the barn also has the long medieval carpenter's assembly marks. (C Cl). Its lower wall has later framing with brick nogging and the spine beam of the added bay is supported here, and extends through.

The added bay has a clasped purlin roof with the principal rafters cut out for the purlins, and the stair was in the corner. The small wing beyond had the scullery and a small bedroom over which was added when this addition to the barn was turned into a house. The bread oven is here.

Of interest is the wallplate which shows diamond mullions for an early window. Post B1 shows the mortice for the top of the barn door.

Pump House is a most interesting building with unusual features which have been preserved.

Recorded by Pauline Huxtable, Ann Monie and Joan Harding February 1984

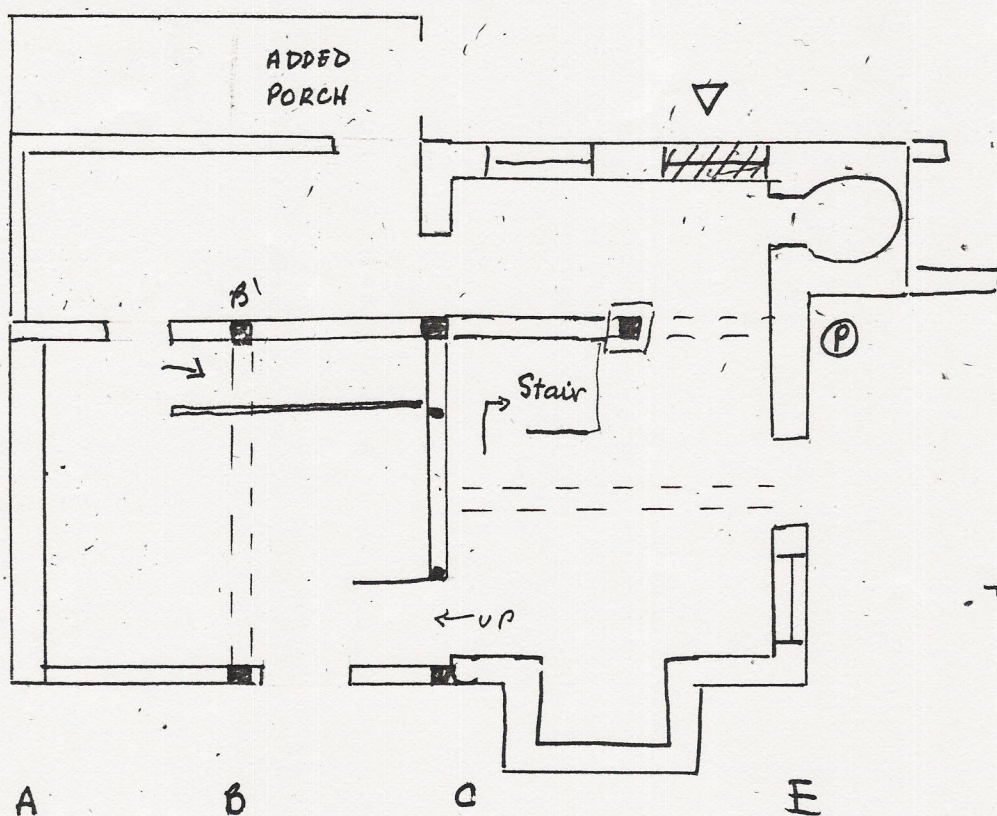
Report by Joan Harding March 1984

C Domestic Buildings Research Group (Surrey) 1984

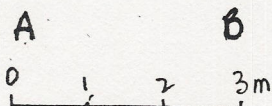
SHACKLEFORD

PUMP HOUSE

3045



Ⓟ - Pump



J. HARDING 284