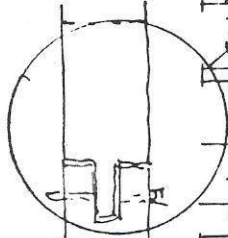


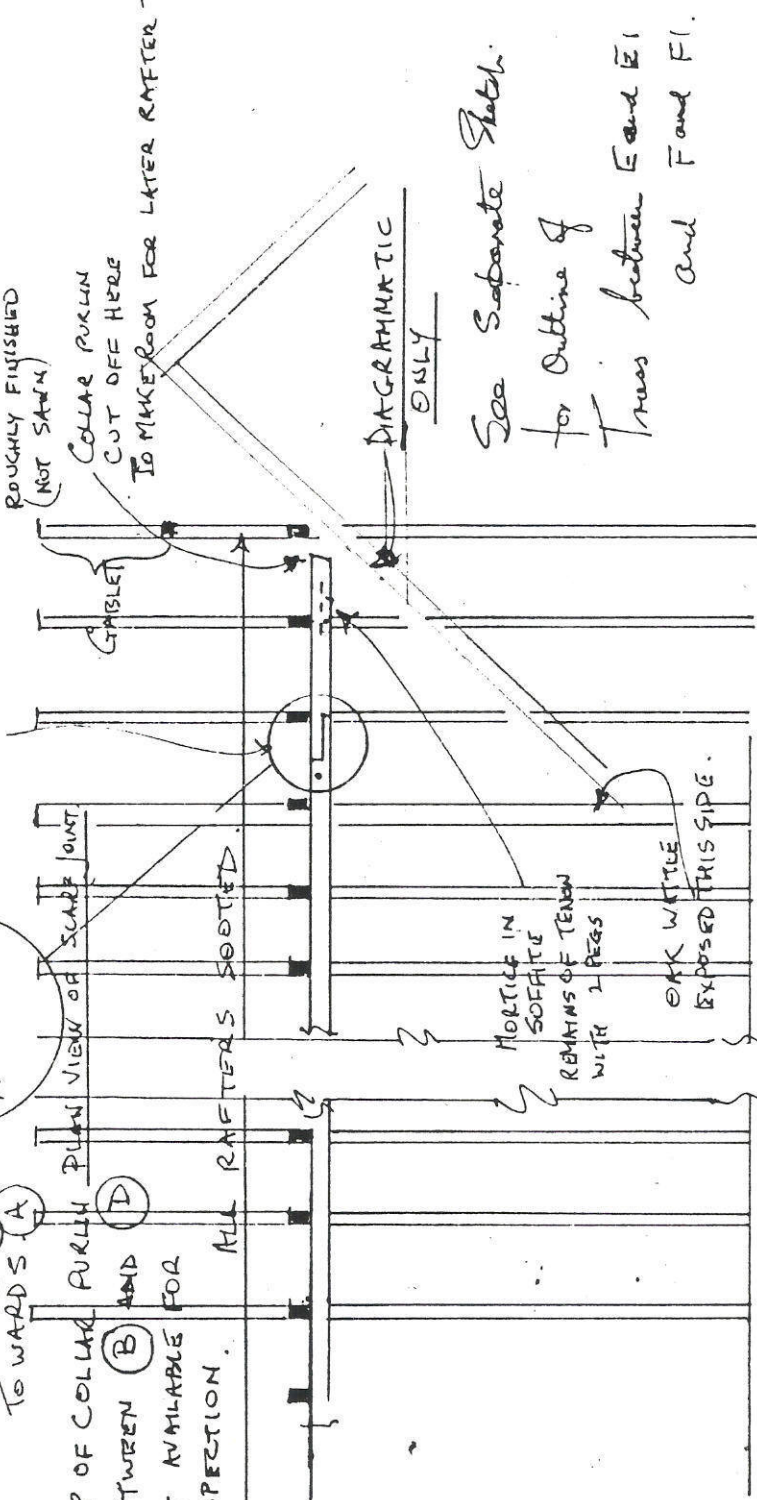
SIMILAR SCARF  
JOINT AT OTHER  
END BEYOND  
TRUSS (B) (B1)  
TOWARDS (A)



COLLARS HALVED TO COMMON & PRINCIPAL RAFTERS  
RAFTERS  
130 x 85  
ROUGHLY FINISHED  
(NOT SAWN)

TOP OF COLLAR FULLY  
PLAN VIEW OF SCARF JOINT  
BETWEEN (B) AND (D)  
NOT AVAILABLE FOR  
INSPECTION.  
ALL RAFTERS SQUARED

COLLAR PURLIN  
CUT OFF HERE  
TO MAKE ROOM FOR LATER RAFTER TO



DIAGRAMMATIC  
ONLY

See Separate Sketch  
for Outline of  
Truss between E and E1  
and F and F1.

(D) (E)

(C)

(F)

